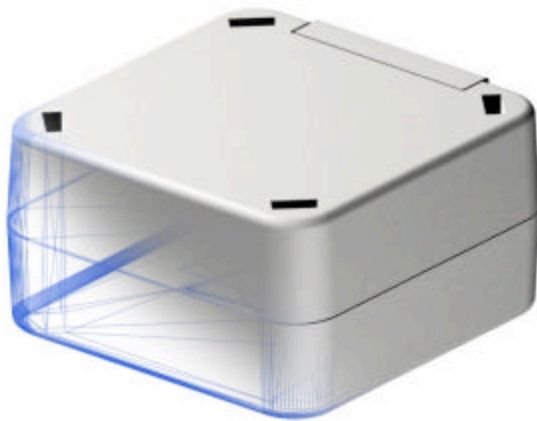


SmartQube

- the antenna solution for M2M applications

SmartQube, a low profile mobile phone system antenna, designed to meet the industrial demands on high RF-performance with smart and easy installation capabilities. It's durable design and low profile makes it ideal to use where a discreet and reliable installation is preferred. The SmartQube antenna is a ground plane independent antenna enabling a wide range of installations on different materials, perfect for M2M applications.



Benefits

- Excellent RF-performance
- Low profile, discrete and durable design
- Ground plane independent!
- Flexible snap-in installation principle, (adhesive and mounting bracket)
- Ideal for M2M applications such as vending machines, power meters



Electrical and Mechanical data for SmartQube

Electrical

- Frequency : 870 – 960 MHz
- Impedance : Nominal 50 Ohm
- Polarization : Linear vertical
- VSWR : 2.5:1 @ 8%
- Gain : 0dBd (2,15dBi)
- Max power : 10W

Mechanical

- Dimension : 75 x 75 x 40 mm
- Weight: : 130 g (incl. cable and connector)
- Cable : 1.5 meter RG-174
- Connector: : SMA (m)
- Material : ABS
- Color : Grey
- Mounting : Adhesive (screw mounting bracket incl.)

Environmental

- Temperature : Operation -40°C to +85°C

Other

- QS9000
- DC-short antenna
- Available with other cable lengths and connectors upon request

Perfect to use where a discreet antenna is needed

- Machine to machine communication e.g. Vending machines and Power meters