

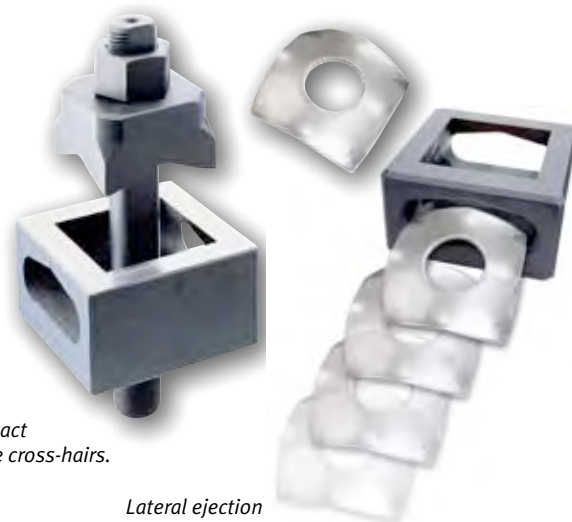
# A



## PUNCHER – SQUARE

Made in Germany by ALFRA

- All punchers have a lateral ejection for the waste piece. No getting stuck inside the die.
- For mild steel ( $F = 370 \text{ N/mm}^2$ )
- Punchers are delivered in stable plastic boxes.
- When placing an order for hydraulic operation please specify the hydraulic model.



4 Markings for exact positioning in the cross-hairs.

Lateral ejection

### Spare parts

Size mm	Max. material thickness mm / Mild Steel ( $F = 370 \text{ N/mm}^2$ )	For operation by	Prod.-No. Puncher complete	Prod.-No. Tie bolt	Prod.-No. Locking nut	Prod.-No. BB pressure nut	Prod.-No. Adapter for hydraulics	Pre-drilling $\varnothing$ mm
12,7 x 12,7	1,75	■ ■	01300	01348	01355	01352	01353	10
15,8 x 15,8	1,75	■ ■	01301	01348	01355	01352	01353	10
19,0 x 19,0	2,0	■ ■	01302	01347	01351	01352	01353	14
22,2 x 22,2	2,0	■ ■	01303	01347	01351	01352	01353	14
24,0 x 24,0	2,0	■ ■	01331	01347	01351	01352	01353	14
25,4 x 25,4	2,0	■ ■	01304	01360	01354	01359	01361	17
45,5 x 45,5	3,0	■	01313	01345	01350			20
46,0 x 46,0	3,0	■	01305	01345	01350			20
50,8 x 50,8	3,0	■	01306	01344	01350			24
68,0 x 68,0	3,0	■	01308	01344	01349			24
92,0 x 92,0	3,0	■	01309	01343	01349			30
125,0 x 125,0	3,0	■	01431	01343	01356			30
138,0 x 138,0	3,0	■	01311	01343	01356			30

## PUNCHER FOR STAINLESS STEEL – SQUARE

Special version for stainless steel (and mild steel  $F = 370 \text{ N/mm}^2$ ). For the use with hydraulic units only



### Spare parts

Size mm	Max. material thickness mm	For operation by	Prod.-No. Puncher complete	Prod.-No. Tie bolt	Prod.-No. Locking nut	Pre-drilling $\varnothing$ mm
46,0 x 46,0	2,0	■	01312	01345	01350	20
68,0 x 68,0	2,0	■	01315	01344	01349	24
92,0 x 92,0	2,0	■	01316	01343	01349	30

- Other sizes available upon request.