

ALFRA

DIN RAIL CUTTING DEVICES

NO MORE METAL CHIPS AND NO MORE DEBURRING!



▶ ERGONOMIC HAND LEVER
FOR OPTIMUM FORCE TRANSMISSION

▶ GUIDING APPARATUS
FOR ACCURATE CUTTING
OF A 90° ANGLE



▶ REINFORCED ECCENTRIC
CAM ON A SOLID SHEAR BLADE
INTEGRATED LENGTH-STOP
(METRIC/INCHES)

▶ STANDING LEGS
FOR STABLE FASTENING





A



ALFRA – Universal Cutting and Punching Equipment

Made in Germany by ALFRA

For DIN carrier rails, for hand lever operation for cutting pieces to length and punching the depicted carrier rails longitudinally and transversely.

- with reinforced eccentric that lies directly over the shearing blade
- less use of force due to better force transfer
- burr-free cutting without loss
- maintenance free
- with 1000 mm length stop limit and guide apparatus for accurate angular cuttings.
- resharpening of shearing blade, exchangeable punch
- special fabrications are also possible (Please send in sample rails of approx. 1000 mm length).

Prod.-No. 03001



Length stop
1000 mm
metric and inch

Guide apparatus for exactly cutting a 90°-angle

Scope of delivery of standard version

Prod.-No.

cpl. with transverse and longitudinal punch 12 x 6.4 mm, 1000 mm length stop limit and guide apparatus

03001

as above, but with round punches 5.5 or 6.0 mm Ø

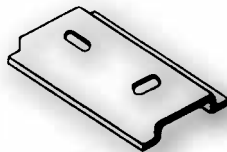
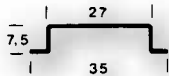
03002

as 03001. but with hydraulic cylinder (without drive)

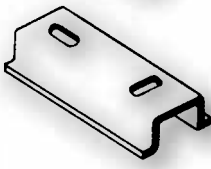
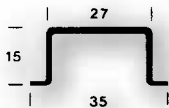
03003

Standard version

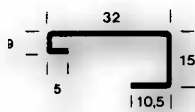
Carrier rail 35 mm/7.5
accord. to EN 50.022



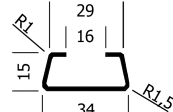
Carrier rail 35 mm/15
accord. to EN 50.022



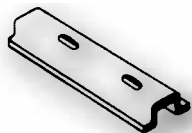
Utgått



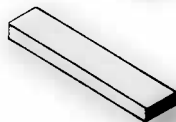
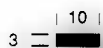
Ersatt av



Carrier rail 15 mm/5.5
accord. to EN 50 045



Copper earthing rail
10 mm x 3 mm



Spare parts for Universal Cutting and Punching Equipment

Prod.-No.

Spare punch + die 12 x 6.4 mm for oblong hole

03005

Spare punch + die 12 x 6.4 mm for cross hole

03006

Spare punch + die 5.5 mm for round hole

03007

Spare punch + die 6.0 mm for round hole

03008

Guiding apparatus, units

03012

Special versions for carrier rails or flat rails,

03011

also made of stainless steel or aluminium as well as plastic, upon request



Prod.-No. 03003 (without pump)

We recommend our electrohydraulic pump as drive DSP 120. Prod.-No. 02027